



ALPHASHOT MICRO PRO V2

Jewelry photography studio for you



Designed to capture the shine

The ultimate solution for capturing still and 360° images as well as videos of small items, including jewelry, gemstones, watches, and other highly reflective items. It's not your ordinary studio. Alphashot Micro Pro v2 has everything you need to bring out the intricate details of hard-to-capture items.





360° spin
orbitvu.com/ring360



Why Alphashot Micro Pro v2?

With Alphashot Micro Pro v2, you can capture the products in a fast and easy way. The software does the necessary post-processing and creates consistent, ready-to-use images, 360° spins, or videos.

No jewelry piece is the same. That's why Alphashot Micro Pro v2 comes with exclusive features and accessories to allow you to highlight the uniqueness of your product.

Because who said macro photography has to be hard?



FLEXIBLE SOLUTION FOR MACRO PHOTOGRAPHY

Tightly integrated hardware, software, and camera control simplify digital content creation and ensure the best quality and consistency. Use custom templates to effortlessly create still images, 360° spins, and product videos for web, print, or other marketing materials. Benefit from add-on accessories to produce the highest-quality product content that sells.



JEWELRY PHOTOGRAPHY STUDIO MADE TO IMPRESS

Shape the product with light and show the many dimensions of the product with backlit LED doors. While with the Superfocus feature you can keep the whole product in focus no matter what aperture value is set. Oh, and the issue with the background? With IQ Mask, you get automatic background removal, so the problem's solved.



ALL-IN-ONE SOLUTION FOR GLOSSY & CHALLENGING PRODUCTS

The studio can be adapted to your style, skillset, workflow, and industry. Shoot all kinds of reflective items, like jewelry, in the formats you need, stills and 360°, and upload the images directly to your e-shop. Grow your business and speed up the time-to-market with batch image capture and processing.

How it works

video

orbitvu.com/microprov2



STEP 1

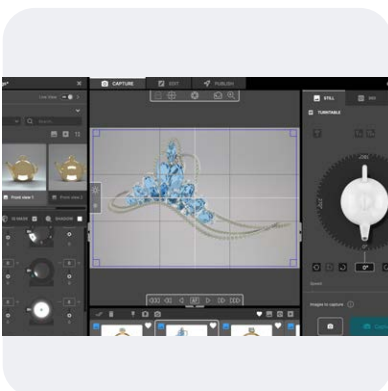
SCAN A BARCODE

Start by scanning the unique product code. Our system will automatically assign it to output file names and link it to the product in your online store.

STEP 2

PLACE THE PRODUCT AND SET THE SCENE

Leverage the benefits of supported positioning and ready-to-use templates. Place the product and choose the lighting and camera scene settings with just one click.



STEP 3

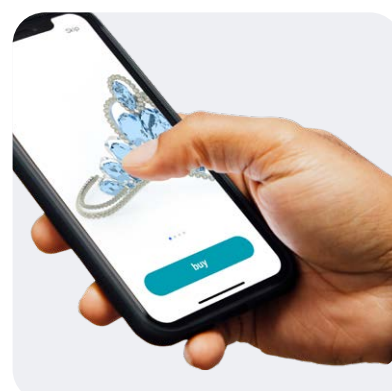
CAPTURE AND EDIT

Our software will control and synchronize the camera with lighting to capture a perfect image of your product. The software helps you edit photographs through powerful built-in tools: contrast, colors, sharpness, etc.

STEP 4

PUBLISH

Export and publish online to multiple predefined locations. Save valuable time while the process runs in the background. With the e-commerce plugins and automatic SKU linking, get the product online in less than a few minutes.



Hardware features

1 BUILT-IN USB HUB

For cable-free operation, Alphashot Micro Pro v2 is equipped with an onboard USB hub to plug your camera directly into the device. We chose a very fast USB 3.2 Gen 1x1 interface to welcome modern mirrorless cameras.

2 CUSTOMIZABLE FUNCTION BUTTON

A simple yet very convenient solution to quickly capture the image, switch on/off lights, and more.

3 SPOT LAMPS V2

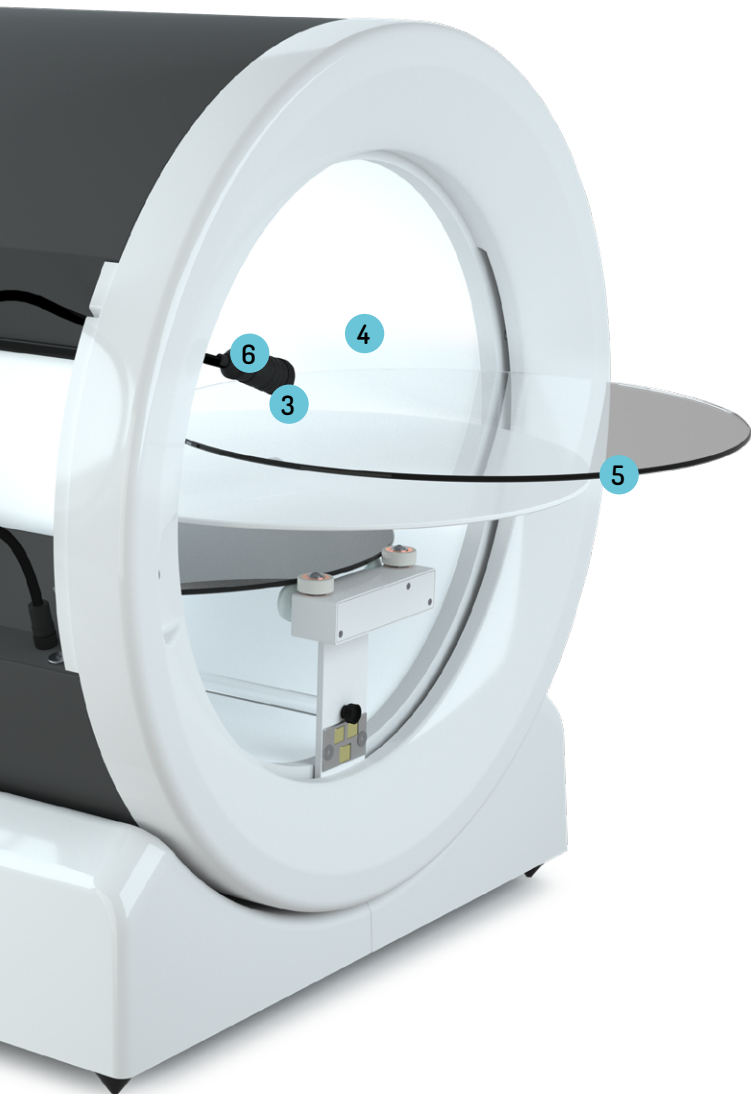
Spotlights will help you to highlight features and details of your product with color temperature set at $5600 \pm 300K$ and CRI at 95+. Equipped with optional diffusers and zoomable lenses, they let you control the sharpness of the light reflection.

4 CYLINDRICAL LIGHTING

Patented 360° of lighting divided into six dimmable panels travels with the camera as it moves, so you can always use it at an angle that best highlights your products. Specially designed LED panels facilitate keeping the contrast.



ALPHASHOT MICRO PRO V2



5 INTERCHANGEABLE TABLES

Alphashot Micro Pro v2 is supplied with three tables to give you the most flexibility in the way you may want to show off your products. A **white table** for products that need smooth and soft reflections, a reflective **black table** for users who want to present their products in a high-contrast dark environment, and a **glass table** used for side views with high contrast.

6 BRILLIANCE LEDS

Aim to add sparks to your precious stone images with two independently controlled lights above and below the lens.

7 INTEGRATED CAMERA SUPPORT

For hassle-free operation, the camera is attached to firm support with a practical ruler that helps the repeatability of your shots. The camera tilt angle can be precisely adjusted with a large knob.

8 BACKLIT LED DOORS

Wirelessly powered, detected and controlled by the software, the doors allow you to build greater lighting contrasts and create smooth, soft reflections on the sides of the photographed object.

Additional accessories



STANDARD DOORS

[order code 235A35]

Lightweight and easy to attach, the doors are a perfect replacement for backlit doors. Attach silver and black side reflectors to them and create special effects.



[see the effect
orbitvu.com/microdoors](https://orbitvu.com/microdoors)



SIDE REFLECTORS

[order code 235A10/235A20]

Mounted on the doors of the device, they allow you to control the amount of contrast you want to give to your items. Available in silver and black. Sidenote: they can be used only with standard doors.



[see the effect
orbitvu.com/microreflectors](https://orbitvu.com/microreflectors)



SUPPORT KIT FOR WATCHES

[order code 235A28/235A29/235A30]

A set of watch supports that helps to shape the straps and bracelets for a more natural look. Available in 3 colors: white, black, and brown. In addition, each set includes 3 sizes: S, M and L.



[see the effect
orbitvu.com/watch-supports](https://orbitvu.com/watch-supports)

Technical specifications

ALPHASHOT MICRO PRO V2

[order code 235H3]

WHAT'S INCLUDED

HARDWARE

3×replaceable turntables (black shiny/matt, transparent glass and white opalescent)

2×zoomable spot light

4×spotlight diffusers (small and large)

2×black reflectors (back and front)

1×necklace support

1×transparent fishing line holder

1×ring fixing kit

2×USB connection cables*

1×grey card

SOFTWARE

ORBITVU STATION

software license

ORBITVU VIEWER

(HTML5 player license)

SOFTWARE SPECIFICATIONS

ORBITVU STATION

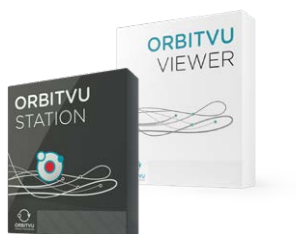
Software for device control and post-production.

Camera compatibility	selected Canon cameras**
Post-production	possible via software
Background removal	automatic with IQ-Mask
Output image formats	png, jpeg, tiff, bmp, webp, other output formats and RAW via external actions
Output video formats	MOV and MP4
Output format for animations	HTML 5, animated GIF
Software compatibility	Mac OS/Windows

ORBITVU VIEWER

Animation/360° spin player

360° technology	HTML5 player
Deep zoom	unlimited zoom technology
Mobile ready	multi-touch gestures and responsive design
Compatibility	any web browser with HTML5 support

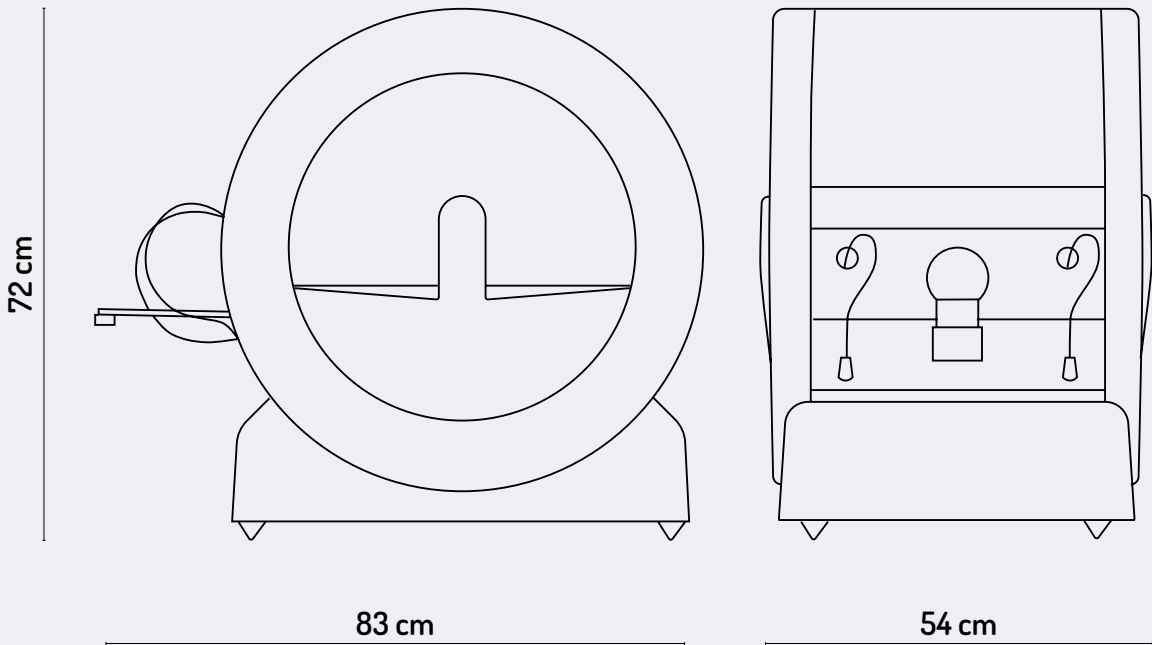


* We require using at least USB port 3.0 (type C or A) when connecting AS Micro v2 to the computer.

** For more information, visit our compatibility page: orbitvu.com/compatibility-guide

All product-related data (including product specification and design) are subject to change without notice.

Device dimensions



Dimensions [L×W×H]:	83×54×72 cm
Max. load:	1kg
Weight nett:	47 kg
Power supply:	100-230VAC, max. 500W
Packaging size [L×W×H]:	93×60×80 cm
Packaging weight:	75 kg

Let your products dazzle the audience!

Control the light and play with post-processing tools on a small scene in Alphashot Micro Pro v2. It provides all the equipment needed to make your creative vision come to life and make your products shine in perfectly crafted stills, 360° views and videos.

Let your creativity run wild and achieve the precision you need with Alphashot Micro Pro v2.



About us

Our photography adventure started over 20 years ago. We set off just when the birth of digital photography and e-commerce created new needs and exciting possibilities to showcase products online.

Digital content production creates the need for consistent, good-quality images produced in a short time and at a reasonable cost. Traditional photography and manual post-production may yield high-quality results but stay slow, complicated, and expensive.

Orbitvu takes the best from traditional photography and combines it with advanced software and hardware innovations. We automate and optimize digital content production. We help to deliver it online and effectively share in your sales and marketing activities.

As an international leader in the automated photography market, we work for you in a team of more than 150 employees worldwide, with our own research & development and 4000 square meters of Europe-based production spaces. Our carefully perfected solutions will cover all of your workflows, improve the online product experience of your customers, and effectively reduce expenditure.

With Orbitvu, your products are teleported to your customers.

FOLLOW US:

